

# WORLIFT



## PRODUCT SHEET



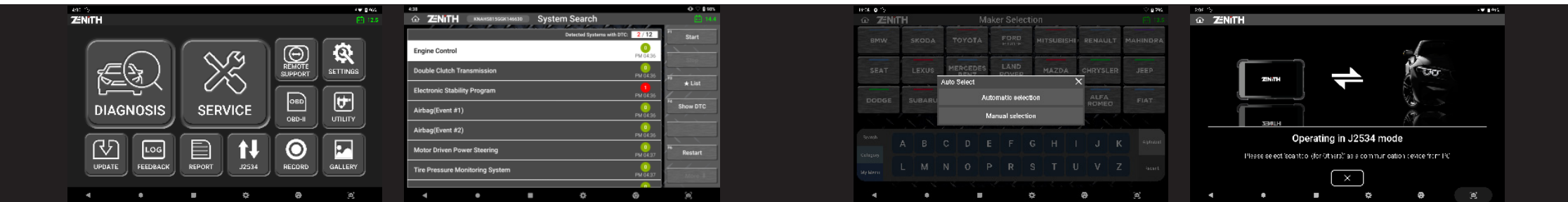
Automotive diagnostic scanner  
**ZENITH z5**



## Zenith Z5 - Powerful and compact scan tool

Introducing the new automotive diagnostic scan tool of EZDS, that combines of their vast diagnostics software and world's best industrial tablet to create a powerful and trusty automotive diagnostic scanner. The Z5 will give you a diagnostic confidence.

## DIAGNOSTIC

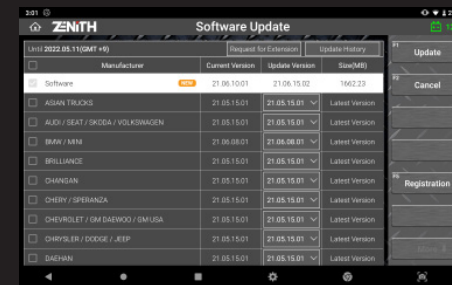
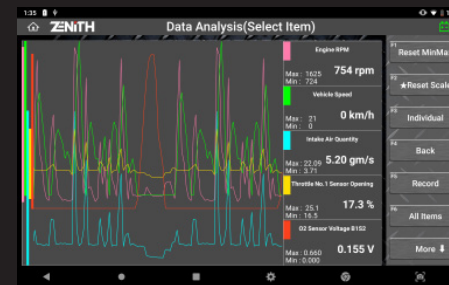
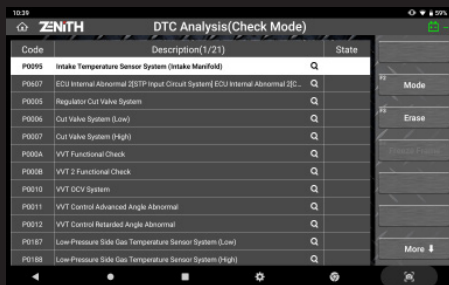


**Simple, Yet Intuitive Layout:** Zenith Z5 offers a simple iconic main menu for easier and quick access to desired functions. With 3 available display modes, the user can customize the theme and button locations.

**Quick System Search:** 'System Search' option automatically scans all the vehicle systems, reports fault codes, and provides access to advanced diagnostic functions in each system detected.

**Auto Selection:** Zenith Z5 offers option to automatically detect the vehicle information including the VIN number, model year, model name, engine type, and other necessary information that are retrieved.

**J2534 Pass-thru:** 'System Search' option automatically scans all the vehicle systems, reports fault codes, and provides access to advanced diagnostic functions in each system detected.

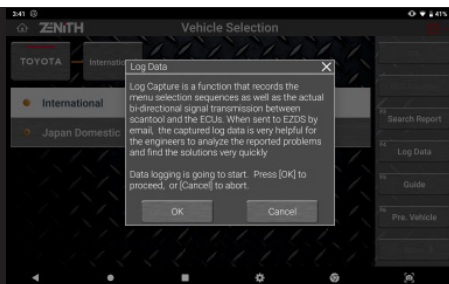


**Full Text Description:** No more acronyms and cutting of significant texts. Z5 offers the long-text DTC descriptions in full screen, so you get all the information you need.

**Service Function:** Time is money. Z5 offers shortcuts to the most frequently used functions in the workshops to save time for technicians to navigate through the original menu layout.

**Fast & Responsive Graphing Mode:** Z5 offers a fast and intuitive graphing mode which instantly self-adjusts maximum and minimum scale, enabling the users to observe and compare live data more efficiently.

**Smart Update:** Z5 offers a quick and easy software update process with its strong network connectivity. Previous or latest software versions for each carline can be quickly downloaded directly from the server, as per the user's preference.



## FEATURES

**Data Log & Feedback System:** In a case of communication or function error, a user can log the bi-directional data transmission between the tool and vehicle control systems. This log can be sent to the software development team via the log capture & transfer function. The data log files received will be analyzed, feedback will be passed on, and a patch file update provided, if necessary, often within 24 hours of receiving the report, during working days. (Exceptions may apply).

**Pre & Post Diagnostic Report:** Z5 offers easy creation of diagnostic report with Pre-scan and Post-scan result. Not only you can save the reports as a PDF file in the internal/external memory, with the help of its advanced network connectivity, you can print the report directly with a wireless printer or send them to a desired E-mail address.

**Fast Performance CPU:** A powerful octa-core processor for optimum diagnostic performance and fast operation to perfectly manage workshop conditions.

**Smart Operating System:** Based on Android 9 OS providing quick boot-up, multi-tasking, fast networking and enhanced system security.

**Eyelluminate™ 8" LCD:** Eyelluminate™ Display LCD provides a crystal clear view both indoors and out, offering field-optimized display under bright workshop environment.

**Eyelluminate™ Display Technology:** Eyelluminate™ Display technology enhances touch functionality and allows technicians to perform tasks with work gloves on under any harsh workshop conditions.

**Service Function:** Diagnostic software programmed by engineers with automotive technicians in mind. Regular and urgent on-demand software updates bring diagnostic confidence to the user.

**J2534 Pass-thru:** Zenith Z5 functions as a J2534 'Pass-Thru' device for programming the ECUs for multiple carlines.

**24V Commercial Vehicles:** Zenith Z5 hardware accepts power & signals of a 24V system, and supports Bi-directional communications with commercial trucks and buses.

**Wireless Connectivity:** Robust connectivity allows for smart updates, quick feedback, Teamviewer Support, Bluetooth printing, browsing and much more.

**Post Diagnostic Report:** An intuitively designed diagnostic report function for fast and easy creation of the report on pre and post scan results.

**Lightweight, Robust Design:** Compact, yet rugged. Ergonomic size to hold in one hand for long periods of time. Zenith Z5 is a light weight scan tool (680g or 1.5 lbs) with sleek, ruggedized design.

## PRODUCT SPECIFICATIONS

**CPU:** Octa Core Processor @ 2.0 GHz

**Operating System:** Android 9

**System Memory:** Internal 32GB, RAM 3GB

**External Memory:** Micro SD Card

**LCD:** 8.0 inch FHD (1920 x 1200)

**Input Devices:** Capacitive Touch Screen, 3 Hard Keys (Power, Volume +, Volume -)

**Camera:** 8 megapixel auto-focus with LED flash

**Sound:** Loud Speaker | 1 Microphone; 3.5 pi standard audio jack

**Rechargeable Battery:** Li-ion 3.8V 3200mAh

**Operating Voltage:** DC9 ~ 30V

**Sensors:** Ambient Light, Proximity, Gyroscope, Accelerometer.

**Dimension:** 225 x 136 x 33mm

**External Port:** USB 1ea, USB C 1ea

**Network:** RJ45 Ethernet, WiFi 802.11 a/b/g/n, Bluetooth 4.2

**Weight:** 22.0462 lbs

**Dimensions:** 19.685 x 19.685 x 11.811 in



### AC/DC Adapter

Category	Specifications
Input Power	100 ~ 240V AC
Frequency	50 / 60 Hz
Input Current	1.5 A
Output Voltage	12V DC
Output Current	3.2 A

### Supported Communication Protocols

CAN (High speed, Low speed, Single)  
ISO-9141, ISO-9141-CARB, KWP-2000  
SAE-J1708, SAE-J1587  
J1850(PWM/VPW)  
Melco Pull-Down

# PRODUCT CONTENTS

- Zenith Z5 Main Body:** EZ5MU001, Base unit in Black
- Main DLC Cable:** EZ5CB001, Main Cable for Zenith Z5
- AC/DC Adapter:** EZ0CB001, AC/DC (KPL-060F) Adapter
- Quick Manual:** Expendable Part, Quick Manual in English
- Z5 Battery:** EZ5BA001, Li-ion 3.8V 3200mAh
- Z5 Stylus Pen:** EZ5AC003, Quick Manual in English
- Z5 Stylus Pen String:** EZ5AC002
- Z5 Rear Hand Strap:** EZ5AC001
- Battery to DC Cable:** EZ0CB003, Power Cable



## Basic kit

1 year warranty / 1 year of actualizations.

- Z5 Packing box.

## Standart kit

1 year warranty / 1 year of actualizations.

- Z5 Carrying Case.



## Deluxe kit

1 year warranty / 2 year of actualizations.

- Z5 Carrying Case.

- Toyota 17 + 1P square
- Toyota 17P Round
- Honda/acura 3P
- Mazda 17P
- Subaru 9P
- Mitsubishi/Hyundai 12+16P
- Kia 20P A Type

- Kia 20P B Type
- Hyundai kia keyless
- Nissan 14P
- Daewoo 12P
- Ssangyong 14P
- BMW 20P
- Audi/VW 4P

## Basic Kit

Single Unit

Multiple Units

## Standart Kit

Single Unit

Multiple Units

## Deluxe Kit

Single Unit

Multiple Units

# ZENITH Z5

Automotive Diagnostic Scan Tool



**WORLIFT**